



GAT MONTHLY MEMBERSHIP PROGRESS REPORT

Results as of: 1/31/2023

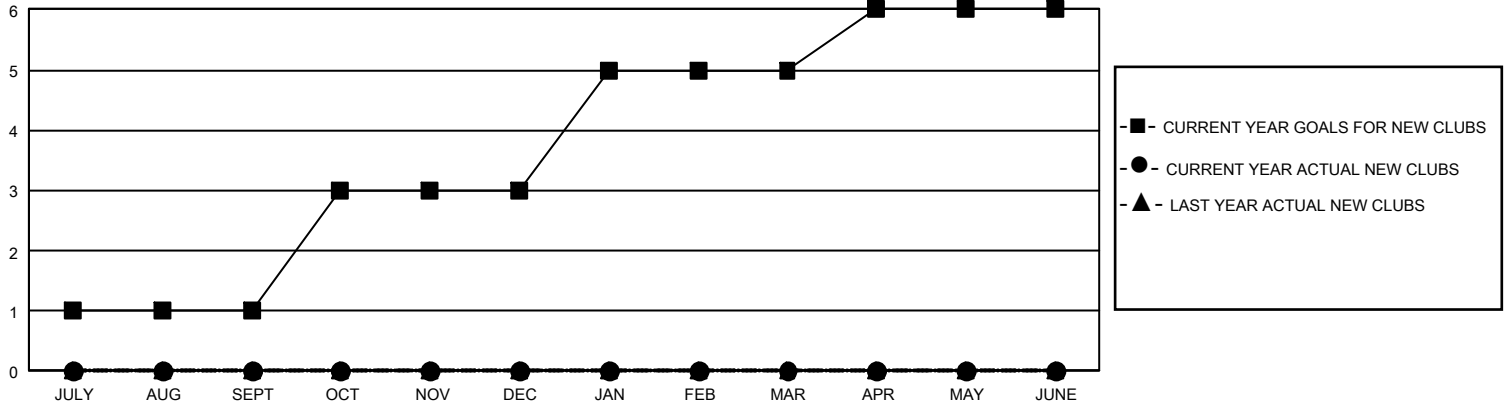
GMT Constitutional Area 5 - C, Group D

REPORT DOES NOT INCLUDE CLUBS IN UNDISTRICTED AREAS.

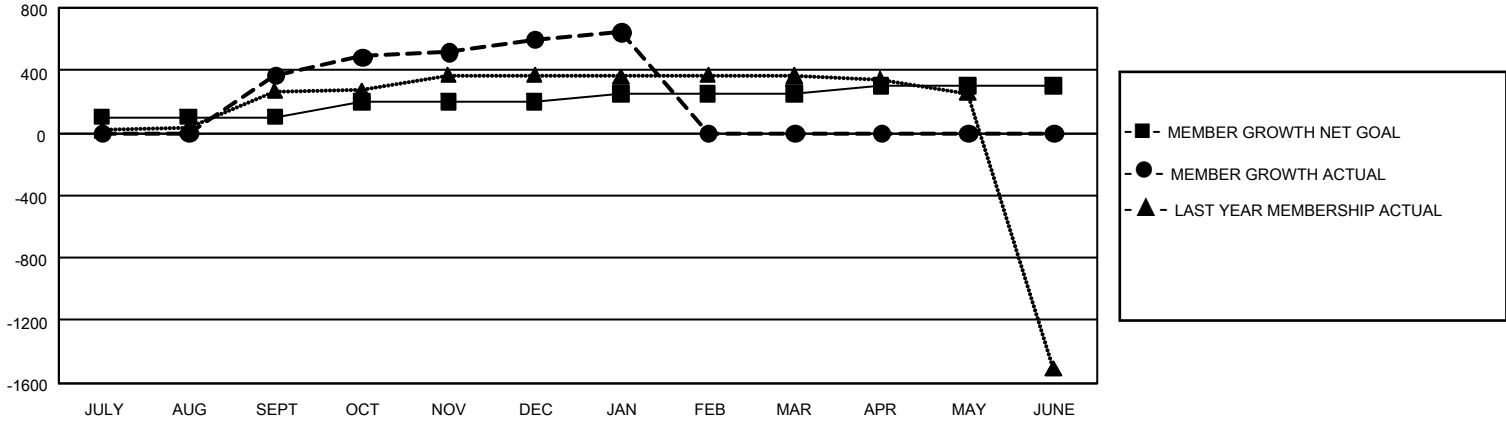
Clubs			
RESULTS FOR 2022-2023			
QUARTER	NEW CLUB GOAL	NEW CLUBS	DROPPED CLUBS
JULY/AUG/SEPT	3	0	1
OCT/NOV/DEC	6	0	0
JAN/FEB/MAR	6	0	0
APR/MAY/JUNE	3	0	0

Members			
RESULTS FOR 2022-2023			
QUARTER	MEMBER GROWTH NET GOAL	MEMBER GROWTH ACTUAL	DROPPED MEMBERS ACTUAL (including transfers)
JULY/AUG/SEPT	100	422	32
OCT/NOV/DEC	100	269	23
JAN/FEB/MAR	50	76	15
APR/MAY/JUNE	50	0	0

GOALS AND ACTUAL NEW CLUBS CUMULATIVE



GOALS AND ACTUAL MEMBERS CUMULATIVE



DROPPED CLUBS: 1	128 CLUBS OF 426 ADDED 1 OR MORE NEW MEMBERS	<u>GENDER DISTRIBUTION</u>	
		MALE	7,429 (64.86%)
<u>DROPPED MEMBERS</u>		FEMALE	4,025 (35.14%)
		NON BINARY	0 (0.00%)
DECEASED	0	PREFER NOT TO ANSWER	0 (0.00%)
CLUB CANCELLED	0	TOTAL FAMILY UNIT MEMBERS	647
OTHER	69	FAMILY MEMBERS PAYING HALF DUES	331
TOTAL	69		

[CLICK HERE FOR CUMULATIVE MEMBERSHIP DATA](#)